

Series
09
LIN Switch Panel.

www.eao.com



Series 09

LIN Switch Panel.

The LIN Switch Panel has been developed for E1 applications and is ideally suited for use in vehicle or cab interiors.

The panel contains nine switches with your choice of ISO 7000 or customer-specific symbols.

EAO, the Expert Partner for Human Machine Interfaces (HMIs), designed the LIN Switch Panel for numerous applications in on-road and off-road vehicles. The reliable LIN Switch Panel offers LIN bus integration which can be further multiplied and combined with other actuators and indicators.

With its ergonomic and innovative design, superb haptics and high-quality surface finish, the LIN Switch Panel meets the requirements of numerous applications for interiors. The panel contains nine individual switches with ISO 7000 or customer-specific symbols.

Typical applications/functions

- Menu button
- Reset button
- Lock/unlock
- Air conditioning on/off
- Seat heating
- Ventilation fan
- Blower position
- And others

Mechanical characteristics

- Actuation force
5–13 N
- Overload
250 N
- Service life
Up to 50 000 cycles of operation

Electrical characteristics

- Designed for 12VDC operating voltage

Illumination

LED symbol illumination

- Colour white with luminance
~20 cd/m²
- Colour red with luminance
~90 cd/m²

LED status indicator

- Colour
Red
- Luminance
~600 cd/m²

Symbols

- Symbols in accordance with ISO 7000
- Customer-specific symbols on request

Connections/interfaces

- LIN interface

Ambient conditions

- Operating temperature
–40 °C ... +85 °C
- Storage temperature
–40 °C ... +85 °C

Protection degree

- IP5K3 protection front (mounted into panel)
- IP20 protection rear (mounted into panel)

Approvals and conformities

- E1 R10
- E1 R118
- CE

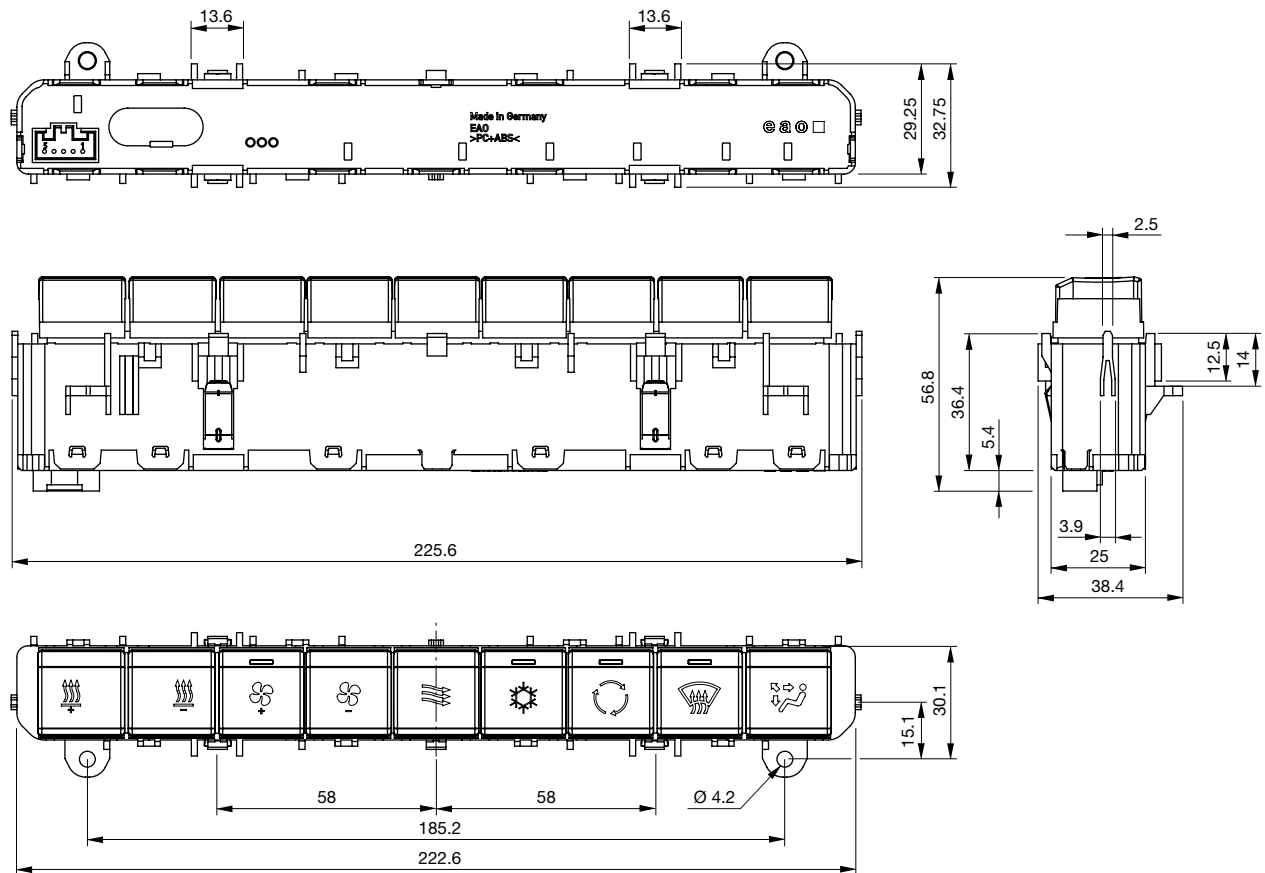
Further information is available at
www.eao.com/09



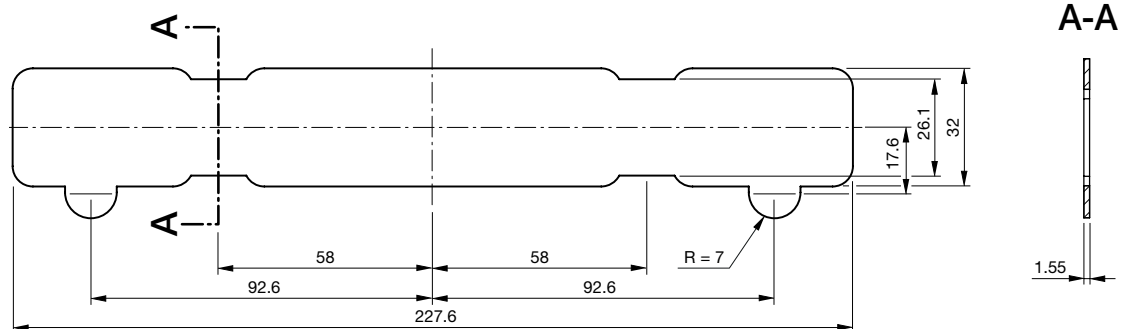
Advantages.

- Flexible application due to configurable switch assignment
- Intelligent HMI with LIN bus integration developed according to IATF 16949
- Ergonomic and innovative design
- Illuminated ISO 7000 or customised symbols
- Quick and easy installation by clip-in or screw-in mounting

Dimensions



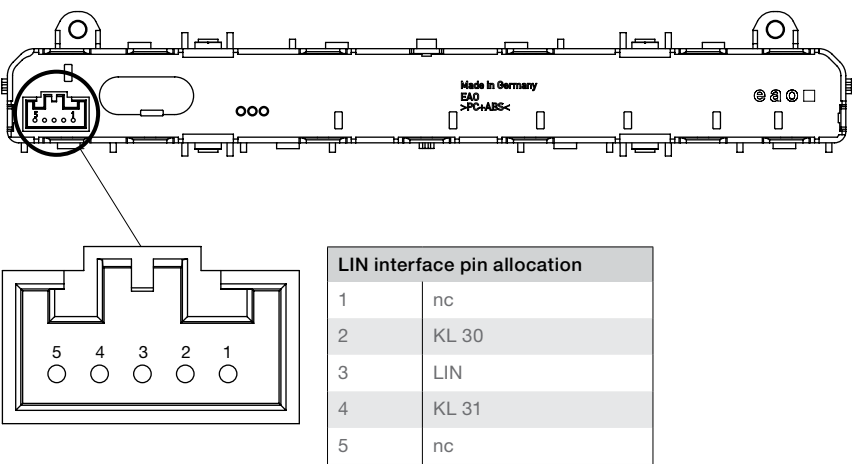
Mounting cut-out (clip-in version)



All dimensions in mm.

Dimensional tolerance according to DIN 16472 – TGS/2768-mk.

Electrical connections and interfaces.



Please note

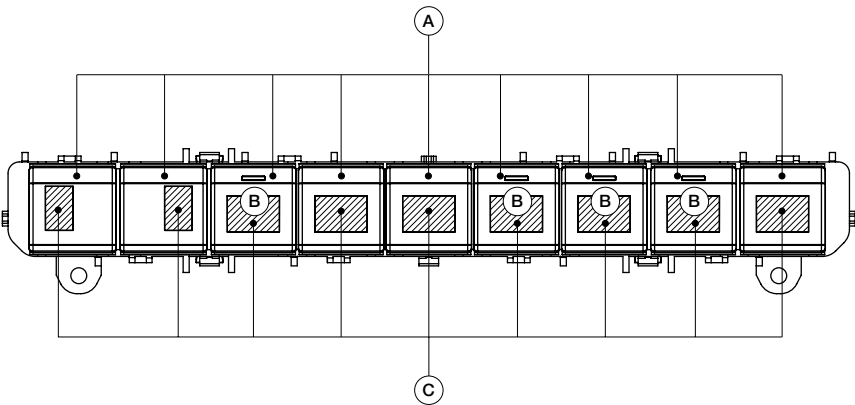
The customer must ensure the functional and product safety compliance of the integration. The customer must perform all safety activities on the integration level and confirm that no functional safety requirements have been derived from the integration with the LIN Switch Panel. As a consequence,

no functional safety requirements have been assigned to the LIN Switch Panel. The customer should be aware that the LIN Switch Panel has been developed according IATF 16949 and fulfils the ISO 26262 classification of a QM level.



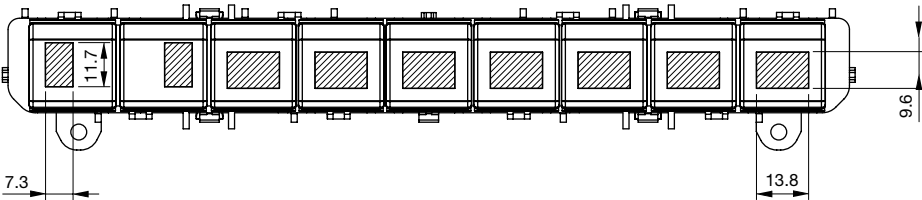
Illumination specifications.

Variant with maximum number of indicators



Legend
A = Position
B = Indicator
C = Area for backlight symbol

Variant without indicators



	Pos. 1	Pos. 2	Pos. 3	Pos. 4	Pos. 5	Pos. 6	Pos. 7	Pos. 8	Pos. 9
Backlight colour	white	white	white	white	red	white	white	white	white
Backlight brightness	~ 20 cd/m²	~ 20 cd/m²	~ 20 cd/m²	~ 20 cd/m²	~ 90 cd/m²	~ 20 cd/m²	~ 20 cd/m²	~ 20 cd/m²	~ 20 cd/m²
Indicator colour (optional)	–	–	red	–	–	red	red	red	–
Indicator brightness (optional)	–	–	~600 cd/m²	–	–	~600 cd/m²	~600 cd/m²	~600 cd/m²	–

Symbols according to ISO 7000 or customer-specific symbols on request.

Expert manufacturers.

EAO creates possibilities. Since 1947.



Founding year: 1947

Number of employees: 600

Headquarters: Olten, Switzerland

Manufacturing Companies: Switzerland,

Germany, North America, China

Sales Companies: 10

Distribution countries: 50

Core markets: Heavy Duty & Special Vehicles,

Machinery, Transportation, Automotive

EAO AG, a Swiss, family-owned company founded in 1947, has developed into one of the world's leading manufacturers of high-quality switches, keyboards, sophisticated control elements, and complete HMI control units and HMI Systems.

Efficient and modern development processes, effective global supply chains, and skilled project and consultation management represent additional services that we offer our customers and business partners around the world.

Your solution-focused expert and partner

We do much more than just manufacture individual control elements. As a solution-focused partner, we provide the option of technically and mechanically customising existing HMI Components in line with our customers' individual requirements. From simple control elements through to sophisticated HMI Systems, from serial production through to installation – we offer the entire range of HMI services and inspire the confidence of our customers.

Visit our website. *EAO.COM*

EAO, the expert partner for Human Machine Interfaces (HMIs), offers a variety of innovative, intuitive and reliable HMI Products and Services.

Online product configurator

Build your tailored product in the online product configuration system and obtain technical specifications and 3D data at the same time. The right HMI for you, step by step: eao.com/products

EAO downloads

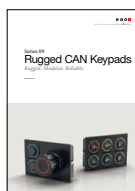
Find more extensive documents such as catalogues, data sheets, certificates and brochures to read and use for research: eao.com/downloads

Related documents

Find out more about our innovative, intuitive and reliable HMI Products and Solutions.



HD & SV
Brochure



Series 09
Brochure



Series 09
Brochure

EAO Contact.

Your centre of excellence.

Headquarters

EAO Holding AG
Tannwaldstrasse 88
CH-4600 Olten
Telephone +41 62 286 92 00
info@eao.com

Manufacturing Companies

Switzerland
EAO AG
Tannwaldstrasse 88
CH-4600 Olten
Telephone +41 62 286 91 11
info@eao.com

EAO Systems AG
Tannwaldstrasse 88
CH-4600 Olten
Telephone +41 62 286 91 11
sales.esy@eao.com

China
EAO (Guangzhou) Ltd.
3/F, Block G4, South China
New Materials Innovation Park
31 Kefeng Road
Guangzhou Science City
CN-Guangzhou, PRC
Telephone +86 20 3229 0390
sales.ecn@eao.com

Germany
EAO Automotive GmbH & Co. KG
Richard-Wagner-Straße 3
DE-08209 Auerbach/Vogtland
Telephone +49 3744 8264 0
sales.esa@eao.com

North America
EAO Corporation
One Parrott Drive
Shelton
US-CT 06484
Telephone +1 203 951 4600
sales.eus@eao.com

Sales Companies

France
EAO France SAS
Nextdoor – Bâtiment Silex
15 rue des Cuirassiers
CS 33821
FR-69487 Lyon Cedex 03
Telephone +33 9 74 18 93 41
sales.efr@eao.com

**Germany, Austria, Czech Republic,
Poland, Slovakia**
EAO GmbH
Langenberger Straße 570
DE-45277 Essen
Telephone +49 201 8587 0
sales.ede@eao.com

Hong Kong (Asia Pacific)
EAO (Far East) Ltd.
Unit A1, 1/F, Block A
Tin On Industrial Building
777 Cheung Sha Wan Road
Lai Chi Kok, Kln
HK-Hong Kong
Telephone +852 27 86 91 41
sales.ehk@eao.com

Italy
EAO Italia S.r.l.
Centro Direzionale Summit –
Palazzo D1
Via Brescia 28
IT-20063 Cernusco sul Naviglio (MI)
Telephone +39 029 247 0722
sales.eit@eao.com

Japan
EAO Japan Co. Ltd.
Net 1 Mita Bldg. 3F
3-1-4 Mita Minato-ku
JP-Tokyo 108-0073
Telephone +81 3 5444 5411
sales.ejp@eao.com

Netherlands, Belgium
EAO Benelux B.V.
Kamerlingh Onnesweg 46
NL-3316 GL Dordrecht
Telephone +31 78 653 17 00
sales.enl@eao.com

North America
EAO Corporation
One Parrott Drive
Shelton
US-CT 06484
Telephone +1 203 951 4600
sales.eus@eao.com

Switzerland
EAO Schweiz AG
Tannwaldstrasse 86
CH-4600 Olten
Telephone +41 62 286 95 00
sales.ech@eao.com

**United Kingdom, Denmark,
Finland, Ireland, Norway, Sweden**
EAO Ltd.
Highland House
Albert Drive
Burgess Hill
GB-West Sussex RH15 9TN
Telephone +44 1444 236 000
sales.euk@eao.com