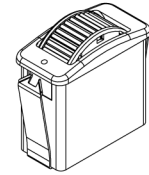
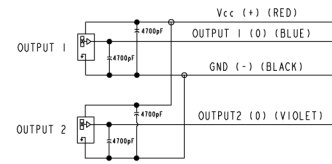
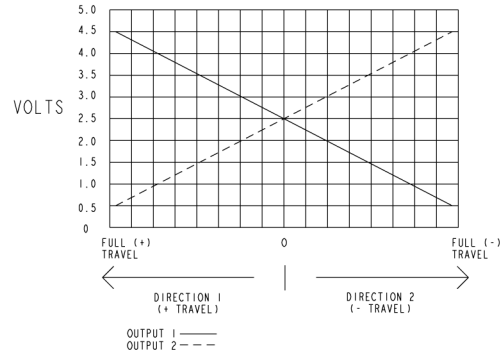
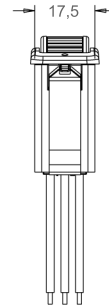
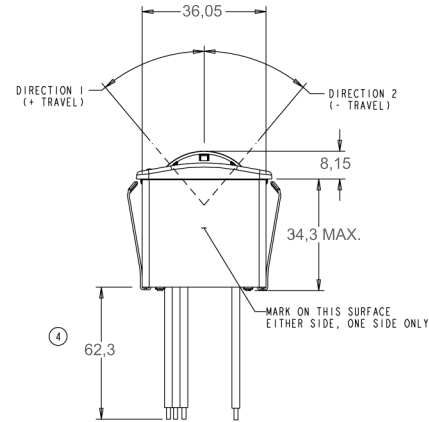
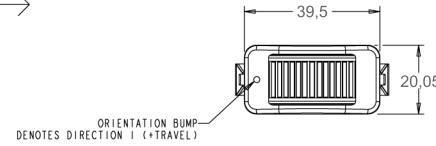


SWITCH CHARACTERISTICS				
ELECTRICAL				
RATED AT V _{cc} = 5V @ 25°C LOAD = 1ma (4-7KΩ)	UNITS	MIN	TYP	MAX
SUPPLY VOLTAGE	VDC	4.50	5.00	5.50
OUTPUTS 1 & 2 AT CENTER	VDC AT 5V V _{cc}	2.35	2.50	2.65
OUTPUT 1 AT FULL TRAVEL DIRECTION 1 (+ TRAVEL)	VDC AT 5V V _{cc}	4.25	4.50	4.55
OUTPUT 1 AT FULL TRAVEL DIRECTION 2 (- TRAVEL)	VDC AT 5V V _{cc}	0.45	0.50	0.75
OUTPUT 2 AT FULL TRAVEL DIRECTION 1 (+ TRAVEL)	VDC AT 5V V _{cc}	0.45	0.50	0.75
OUTPUT 2 AT FULL TRAVEL DIRECTION 2 (- TRAVEL)	VDC AT 5V V _{cc}	4.25	4.50	4.55
SUPPLY CURRENT B=0, V _{cc} =5V, I _o =0	mA			25
MECHANICAL				
MECHANICAL LIFE FULL FORWARD TO FULL BACK		3,000,000		
OPERATING FORCE 25°C AT TOP OF ROLLER	OZ	8	12	16
MAXIMUM ALLOWABLE RADIAL LOAD	LBS			30
ENVIRONMENTAL				
OPERATING TEMPERATURE	°C	-40	20	85
HUMIDITY		96% RH, 70°C, 96 HRS		
DROP		3 FT. MAXIMUM TO CONCRETE		
VIBRATION		PER MIL-810F MINIMUM INTEGRITY		
SEAL INTEGRITY		WATERTIGHT PER IP68S, 1 METER		
SAND AND DUST		PER SAE J1455 (PORTLAND CEMENT)		
RFI WITHSTAND		100V/m 14Hz TO 1GHz		
EMI WITHSTAND		PER MIL-STD-461D/SAE J1113-22		
MATERIAL				
BUTTON TOP		THERMOPLASTIC, BLACK		
BEZEL		THERMOPLASTIC, BLACK		
SNAP ARMS		STAINLESS STEEL		
WIRES		24 AWG		



SCALE 1:1



DRAWING NO.
HTW-0000009

STIGAB
STIG ÖDLUND AB