

CHARACTERISTICS

ELECTRICAL:

RATINGS AT 28 VDC	
LOAD	N.O./N.C.
RESISTIVE	5 AMPS
INDUCTIVE	3 AMPS
DWV	1050 VRMS

ELECTRICAL LIFE: 25,000 CYCLES AT FULL LOAD

MECHANICAL:

TOTAL TRAVEL: .080 MAX
 OVERTRAVEL: .010 MIN ■
 OPERATING FORCE: 12 ± 4 OZ.
 MECHANICAL LIFE: 1,000,000 CYCLES

PHYSICAL

TEMPERATURE RANGE -55°C TO +85°C
 ENCLOSURE DESIGN: DUSTTIGHT/PROTECTED AGAINST
 SPLASHING WATER PER IP64
 BUTTON: THERMOPLASTIC, BLACK, MATTE FINISH
 CASE: THERMOPLASTIC, BLACK, MATTE FINISH

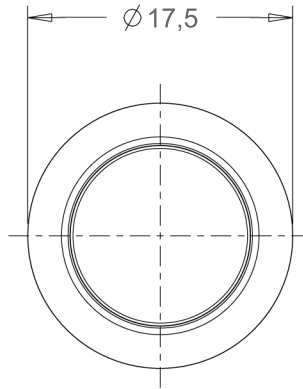
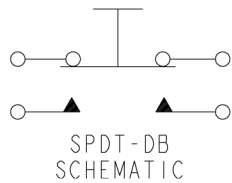
(B)

MARKING:

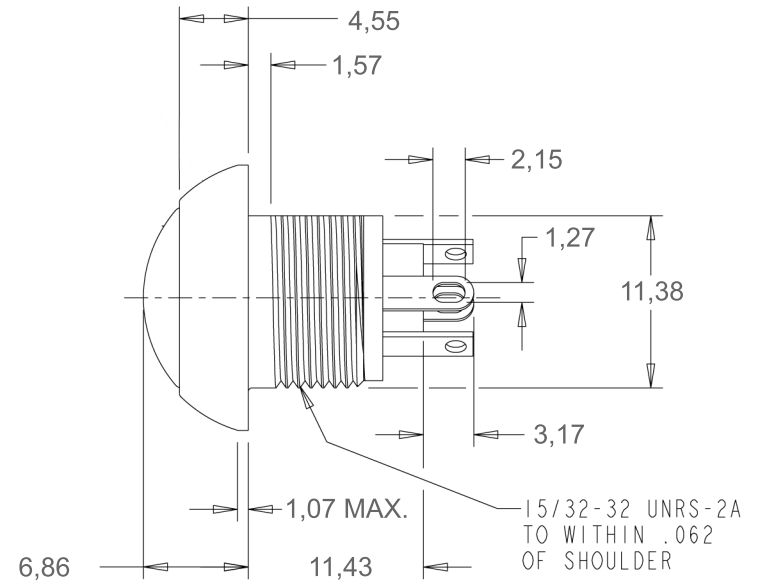
DATE CODE (YYWW)

MOUNTING HARDWARE:

HEXNUT & LOCKWASHER



SCALE 1:1



DRAWING NO.

P9-100061

STIGAB
STIG ÖDLUND AB